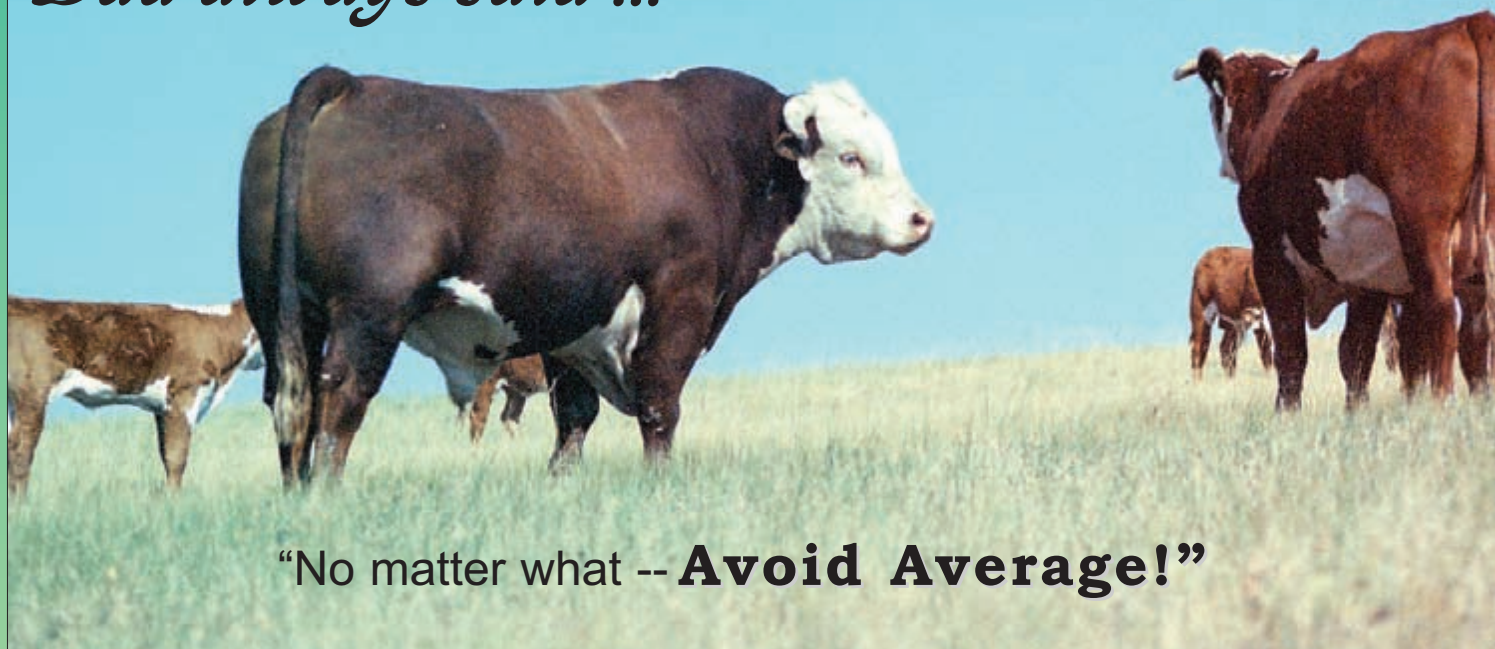


Dad always said...



“No matter what -- **Avoid Average!**”

GOLDEN ACHIEVER 2072 (Archie)

BW 3.5; WW 51; YW 83; MM 20; M&G 45; SC 1.5; REA 0.42; IMF 0.03
Breed Average:
BW 3.7; WW 36; YW 61; MM 14; M&G 32; SC 0.6; REA 0.07; IMF 0.00

Most of today's leading cattle producers hold to the same proven direction that Dad liked to tell us about through the years. And yet, in spite of intense industry wide consideration, the average number of cattle grading choice and the average number of cattle yielding better than four has remained just about the same over the last 10 years.*

Several registered breeders are very sincere in their desire to “ratchet-up” the genetic excellence they provide the commercial cattle industry, but the problem remains that a lot of “data giants” when put to the real world test of range, feedlot and rail performance end up only being midgets.

May we at High Desert suggest that you accept our invitation to join us on Nov. 17, 2005, for our annual production sale where the bulls and heifers being offered are backed up. Backed up by 103 years of selection against average and backed up by the industry's only rock solid two-year “bumper-to-bumper” guarantee.

**Cattle-Fax, 2005 BIF Conference*

As an added feature this year, in addition to our 105 High Desert Power Bulls, we are offering 15 very fancy replacement heifer calves. They are sired by KCF Bennett 3008 M326, P606, Legend, Triple Plus, and Archie.

Heifer Average:

BW 2.7; WW 44; YW 75; MM 20; M&G 41; REA 0.13; IMF .14

Breed Average:

BW 3.7; WW 36; YW 61; MM 14; M&G 32; REA 0.07; IMF 0.00



Jordan and Kelley Largent with the 2005 Wyoming Junior Field Day Reserve Champion Hereford Heifer.

VALUE - ADDED EXPECTED?



Most ranchers face enough difficulty today without having to deal with the headache of hyped-up genetics that fail to measure up. If you are like most, you are not pleased when your genetic investments disappoint you with less pounds, less fertility, less manageable dispositions, less feedlot performance and finally far less carcass premium ability.

If you want to be pleasantly surprised with better-than-expected results, why don't you turn to the range specialists that have spent over 100 years developing practicality and data-excellence to the highest level that can be found.

Nov. 17, 2005, High Desert "Avoid Average" Sale will offer the following:

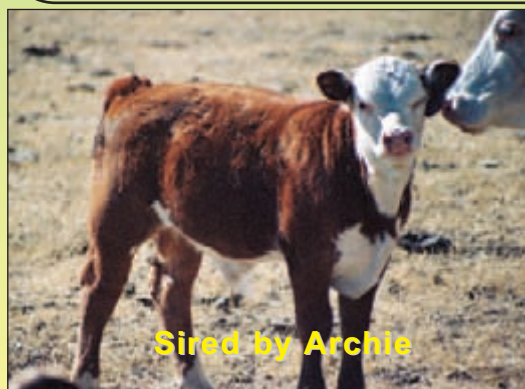
- * 100 guaranteed bulls.
- * Most breed-leading sires are represented in the offering.
- * Many of our customers have reported better-than expected results from their investment.
- * With a hybrid-vigor "kick" like no other, up to \$100/calf extra is possible.
- * These bulls and heifers represent our very best. None sold early or held back.



The 30 COMMERCIAL Bred heifers are bred to UPS Domino 3027 or GO 205 Excel 0210



15 heifers sired by P606, LEGEND 242, KCF BENNETT 3008 M326, BKR TRIPLE PLUS, GOLDEN ACHIEVER 2072 (\$250 DISCOUNT IF PURCHASED BY A JUNIOR.)



HIGH VOLUME SELECTION
RELIABLE GENETICS
SHOW-RING VALUE
POUND POTENTIAL
NONE HELD

COME TO HIGH DESERT!



Golden Achiever 2072

THE PERFORMANCE

	BW	WW	YW	MM
Archie:	3.5	51	83	20
Breed Ave:	3.7	36	61	14

	M&G	SC	REA	IMF
Archie:	45	1.5	0.42	0.03
Breed Ave:	32	0.6	0.07	0.00

This one bull just may be the most important investment value that you add to your program, "ARCHIE" probably has more potential to be more right in more areas for his time than any bull of any breed anywhere!

THE PROGENY

Unequaled! His first yearlings won the prestigious Pen Bull Show, two division champions, get-of-sire and best 6-head at the 2005 Wyoming State Fair.

**Please be with us Nov. 17, 2005 for
*THE HIGH DESERT "AVOID AVERAGE" SALE.***

- *Selling 100 Bulls
- *Selling 30 Commercial Bred Heifers
- *Selling 15 Top Show Prospect Heifer Calves

- *Free Delivery in the Continental U.S.
- *Free two-year guarantee on the bulls
- *Auctioneer: Joe Goggins

*Lunch at noon, Sale at 1 p.m.

LARGENT AND SONS

Hereford Cattle Since 1902

P.O. Box 66, Kaycee, Wyoming 82639

Web site: www.largentandsons.com

email: redfork@starband.net

Mark, Cathy, David and Heather

(307) 738-2443 or (307) 738-2297

Cell (307) 267-4491



Power up... THE HIGH DESERT WEIGH

